

**Flat 20, Suvretta House Grange Road Shanklin, PO37
6NW**

£90,000



This wonderful ground floor apartment is conveniently situated just moments from Shanklin Old Village with a variety of local shops, amenities and eateries. The accommodation comprises entrance hall, open plan kitchen/ lounge, double bedroom and modern shower room. This modern property would make an ideal first time purchase or buy to let investment. Viewings are highly recommended.

MODERN APARTMENT

COMMUNAL GARDEN

GROUND FLOOR

OPEN PLAN LIVING/KITCHEN

ONE DOUBLE BEDROOM

IDEAL BUY TO LET OR FIRST TIME BUY

ROOMS

Kitchen 9' 10" x 3' 3" (3m x 1m)

A compact open plan modern kitchen

Lounge 12' 6" x 9' 2" (3.8m x 2.8m)

A comfortable sized living space, open plan with the kitchen.

Shower Room 6' 11" x 3' 11" (2.1m x 1.2m)

This modern shower room has a freestanding shower, low level W/C and basin.

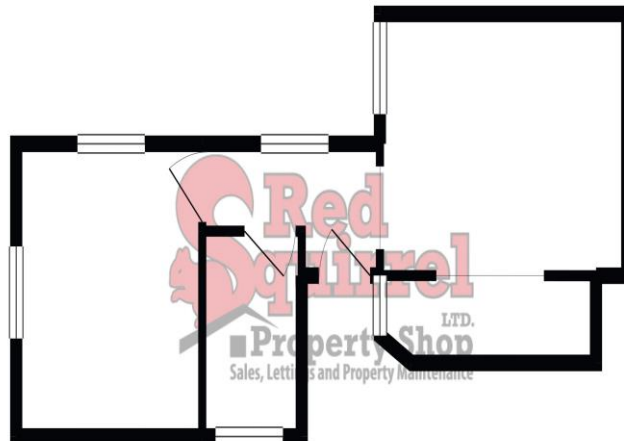
Bedroom

A good sized double bedroom with views over the communal garden.

Outside

This property has access to the communal garden.

GROUND FLOOR



Whilst every attempt has been made to ensure the accuracy of the floorplan contained here, measurements of areas, windows, rooms and any other items are approximate and no responsibility is taken for any error, omission or mis-statement. This plan is for illustrative purposes only and should be used as such by any prospective purchaser. The services, systems and appliances shown have not been tested and no guarantee as to their operability or efficiency can be given.
Made with Metropix (2020)

